

Erosion Control

SOIL SEPARATOR

24" x 300'

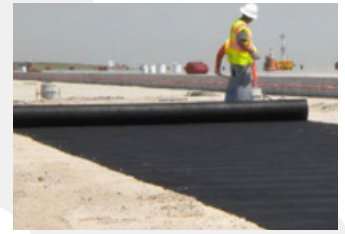
JUTE MESH

4' x 225' JUTE MESH SOIL SAVER ROLL
6" 11 GA JUTE STAPLES - 100 PC



NON-WOVEN FABRIC

7.5' x 300'
12.5' x 360'
15' x 300'
12.5' x 360'
15' x 360'



BIO STRAW WATTLE & STRAW WATTLE

8" x 25' STRAW WATTLE
9" x 25' BIO STRAW WATTLE
9" x 25' BIO STRAW WATTLE PLT 12

WATTLE STAKES

1" x 1" x 18" WATTLE STAKE
1" x 1" x 18" WATTLE STAKES - 50 PC



FENCING

36" x 100' SILT FENCE



POLY BAG - FILLED

- 2000 HR RATED BAGS

1/4 CF - WHITE SAND FILLED
1/2 CF - WHITE SAND FILLED
1/2 CF - WHITE GRAVEL FILLED

*Burlap filled bags available



EMPTY BAGS

- 2000 HR DOUBLE STITCHED FOR SAND
14" x 26" WHITE POLY BAG W/ TIE

*Other colors available & 4000 HR available.

- 4000 HR + FOR GRAVEL
14" x 26" YELLOW NON WOVEN MONOFILAMENT
BAG WITH TIE

*Other colors available.



Rain Protection

RAINSUITS/STEEL-TOE BOOTS

AVAILABLE:

RAINSUITS SIZE L TO 4XL

RAINBOOTS SIZE 7-13



E-ZUP SHELTER BLUE LIGHTWEIGHT & PORTABLE

10' x 10' E-ZUP SHELTER BLUE

12' x 12' E-ZUP SHELTER BLUE



POLYFILM

20' x 100' 4 MIL POLYFILM - CLEAR
20' x 100' 6 MIL POLYFILM - CLEAR
20' x 100' 10 MIL POLYFILM - CLEAR
20' x 100' 4 MIL POLYFILM - BLACK
20' x 100' 6 MIL POLYFILM - BLACK
20' x 100' 10 MIL POLYFILM - BLACK



TARPS

10' x 20' TARP
12' x 16' TARP
16' x 20' TARP MED
18' x 24' TARP MED
20' x 30' TARP
20' x 40' TARP



13 LOCATIONS TO SERVE YOU

Lighting



100' LED LIGHT STRING

- Hanger hooks included, optional magnetic hook kit
- Lights have rugged protective grids



M18 LED WORKLIGHT



8W LED HANDHELD WORKLIGHT

- 500 Lumen
- Foldable Hanging Hook



132W LED TRIPOD WORK LIGHT

- 13200 Lumen
- 5 ft, 18/3 AWG SJTW Cord

Heating & Air Movers

MAXAIR CONFINED SPACE 12" VENTILATOR & HOSE

- 2000 CFM
- 2-Speed Control
- Intake or Exhaust



PROPANE HEATERS

- DURA HEAT FORCED AIR HEATER
- SINGLE-HEAD PROPANE HEATER
- DOUBLE-HEAD PROPANE HEATER



550 CFM AIR MOVER

- Stackable
- 3-Speed & 3 drying positions
- Power receptacles for linking multiple units



3800 FPM AIR MOVER

- Full-featured commercial dryer
- Low 4.4A draw
- 22 lb., compact
- 120V



Cleanup

6 CF WHEELBARROW

- Steel tub and handles
- Comfort grip



ROUND OR SQUARE POINT

- ROUND POINT SHOVEL
- SQUARE POINT SHOVEL

- Hardwood handles



9 GAL M18™ FUEL VAC



FUEL VACUUMS



9 GAL M18™ FUEL VAC

- .25 Gal canister capacity



M18™ FUEL BACKPACK VAC

- 1 Gal canister capacity

Cleanup

RUBBERMAID MAINTENANCE SUPPLIES

- 55 GAL BRUTE TRASH CAN
- 55 GAL LID
- BRUTE CADDY BAG CONTAINER
- BRUTE TRASH CAN DOLLY
- LID FOR 10G BRUTE TRASH CAN
- 10 GAL BRUTE TRASH CAN
- 20 GAL BRUTE TRASH CAN
- 44 GAL BRUTE TRASH CAN GRAY
- 32 GAL BRUTE TRASH CAN



SQUEEGEE

- 24" FLOOR SQUEEGEE - CURVED
- 36" FLOOR SQUEEGEE - CURVED

DISPOSAL EQUIPMENT

- 20 CT 42 GAL CONTRACTOR BAG
- STEEL DUST PAN
- POLY DUST PAN LRG W/HNDL

PUSHBROOMS

- 24" PUSH BROOMS W/BRACE



Waterproofing

HENRY PRODUCTS FOR WET/DRY APPLICATION

- 208 WET PATCH® ROOF LEAK REPAIR
- 208R RUBBERIZED WET PATCH® ROOF LEAK REPAIR
- 107 SEALER & DAMPROOFER



ELASTOMERIC JOINT SEALANTS

- SIKAFLEX -1A ELASTOMERIC JOINT SEALANT / ADHESIVE
- WHITE 10.1 OZ CARTRIDGE
- CAPITOL TAN 10.1 OZ CARTRIDGE
- BLACK 10.1 OZ CARTRIDGE
- DARK BRONZE 10.1 OZ CARTRIDGE
- ALUMINUM GRAY 10.1 OZ CARTRIDGE
- LIMESTONE 10.1 OZ CARTRIDGE
- LIMESTONE 20 OZ SAUSAGE
- PREMIUM-GRADE, HIGH-PERFORMANCE, MOISTURE-CURED, 1 COMPONENT, POLYURETHANE BASED, NON-SAG ELASTOMERIC SEALANT.
- CAN BE USED IN GREEN AND DAMP CONCRETE APPLICATIONS.



REDGARD WATERPROOFER

- 1G REDGARD ELASTOMERIC WATERPROOFER
- For stone and tile installation
- 1-coat crack protection
- 2-coat waterproofing
- Dries quickly
- Covers up to 350 SF



RAINBUSTER CAULKING

- 12 OZ GRAY CAULK GRAY
- 12 OZ GRAY CAULK GRAY (24)
- 12 OZ WHITE CAULK WHT
- WHITE CAULK WHT (24)
- 12 OZ WHITE CAULK WHT
- WHITE CAULK WHT (24)



RAM BOARD PRODUCTS

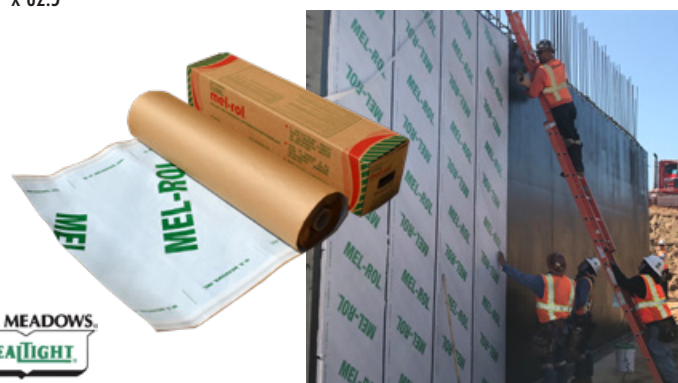
- 38" x 100' ROLL FLOOR PROTECTION
- Utilizes flex-fiber technology
- Added protection against water, paint, mud & more

- 2.83" x 164' SEAM TAPE
- Kraft paper backing



MEL-ROL WATERPROOFING MEMBRANE

- 38.5" x 62.5"



Drainage

PERFORATED PIPE

- 3" x 10' HDPE PIPE
- 4" x 10' HDPE PIPE
- 4" x 20' SCH40 PERFORATED PIPE



DRAIN SLEEVE

- 4" x 100' S&D DRAIN SLEEVE



Jobsite

FIBERGLASS STEP LADDERS

- TYPE II 4'
- TYPE 1A 4'
- TWIN - TYPE1A 6'



EXTENSION LADDERS

- ALUM TYPE I 16'
- FBRGLS TYPE 1A 20'
- FBRGLS TYPE 1A 16'
- FBRGLS TYPE 1A 24'
- FBRGLS TYPE 1A 28'

BUCKETS

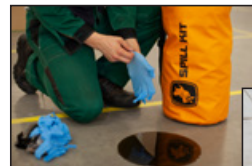
- 5 GAL RED PLASTIC BUCKET
- 5 GAL PLASTIC BUCKET LID



Water & Run Off Containment



**SPILL BULLY
Innovative & Eco-Friendly**



▲ **Spill Kits**
Eco-Friendly Absorbents



▼ **Containment**
Heavy Equipment
Concrete/Paint Washout



▲ **Stormwater**
Sediment Control
Erosion Management



GLOVES

- DEMO GLOVE MD
- DEMO GLOVE LG
- DEMO GLOVE XL



TRASH PUMPS

- 2" 211GPM
- 3" 396GPM



SUMP PUMPS

- SUMP PUMP 1HP 73GPM
- SUMP PUMP 1HP 79GPM
- SUMP PUMP 1HP 87GPM



- SUMP PUMP .25HP 33GPM
- SUMP PUMP FLOAT SWITCH



Anaheim	Baldwin Park	Buena Park	Corona	Costa Mesa	Escondido	Fallbrook
1220 E. Ball Rd. Anaheim, CA (714) 772-5444	13470 Dalewood St. Baldwin Park, CA (626) 960-4802	6586 Beach Blvd. Buena Park, CA (714) 522-2864	150 W. Blaine St. Corona, CA (951) 278-4000	1100 Bristol St. Costa Mesa, CA (714) 556-1500	707 N. Andreasen Dr. Escondido, CA (760) 745-0414	215 E. Ivy St. Fallbrook, CA (760) 728-6151
Laguna Beach	Lake Forest	Los Alamitos	Northridge	Pasadena	San Juan Capistrano	South Bay
1765 Laguna Cyn. Rd. Laguna Beach, CA (949) 494-6538	23132 Orange Ave. Lake Forest, CA (949) 830-3600	10742 Los Alamitos Blvd. Los Alamitos, CA (562) 346-2100	18537 Parthenia St. Northridge, CA (818) 349-6701	3003 E. Colorado Blvd. Pasadena, CA (626) 993-2100	23865 Stonehill Dr. San Juan Capistrano, CA (949) 496-5765	2600 Del Amo Blvd. Torrance, CA (424) 350-3000

Connect With Us.



GanahlLumber.com