

Erosion Control

SOIL SEPARATOR

24" x 300'

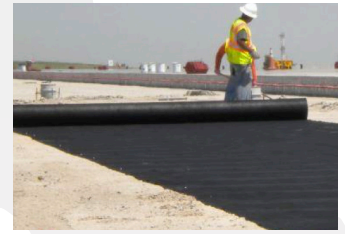
JUTE MESH

4' x 225' JUTE MESH SOIL SAVER ROLL
6" 11 GA JUTE STAPLES - 100 PC



NON-WOVEN FABRIC

7.5' x 300'
12.5' x 360'
15' x 300'
12.5' x 360'
15' x 360'



BIO STRAW WATTLE & STRAW WATTLE

8" x 25' STRAW WATTLE
9" x 25' BIO STRAW WATTLE
9" x 25' BIO STRAW WATTLE PLT 12

WATTLE STAKES

1" x 1" x 18" WATTLE STAKE
1" x 1" x 18" WATTLE STAKES - 50 PC



FENCING

36" x 100' SILT FENCE



POLY BAG - FILLED

- 2000 HR RATED BAGS

1/4 CF - WHITE SAND FILLED
1/2 CF - WHITE SAND FILLED
1/2 CF - WHITE GRAVEL FILLED

*Burlap filled bags available



EMPTY BAGS

- 2000 HR DOUBLE STITCHED FOR SAND
14" x 26" WHITE POLY BAG W/ TIE

*Other colors available & 4000 HR available.

- 4000 HR + FOR GRAVEL
14" x 26" YELLOW NON WOVEN MONOFILAMENT
BAG WITH TIE

*Other colors available.



Rain Protection

RAINSUITS/STEEL-TOE BOOTS

AVAILABLE:

RAINSUITS SIZE L TO 4XL

RAINBOOTS SIZE 7-13



E-ZUP SHELTER BLUE LIGHTWEIGHT & PORTABLE

10' x 10' E-ZUP SHELTER BLUE

12' x 12' E-ZUP SHELTER BLUE



POLYFILM

20' x 100' 4 MIL POLYFILM - CLEAR
20' x 100' 6 MIL POLYFILM - CLEAR
20' x 100' 10 MIL POLYFILM - CLEAR
20' x 100' 4 MIL POLYFILM - BLACK
20' x 100' 6 MIL POLYFILM - BLACK
20' x 100' 10 MIL POLYFILM - BLACK



TARPS

10' x 20' TARP
12' x 16' TARP
16' x 20' TARP MED
18' x 24' TARP MED
20' x 30' TARP
20' x 40' TARP



14 LOCATIONS TO SERVE YOU

Lighting



100' LED LIGHT STRING

- Hanger hooks included, optional magnetic hook kit
- Lights have rugged protective grids



M18 LED WORKLIGHT



8W LED HANDHELD WORKLIGHT

- 500 Lumen
- Foldable Hanging Hook

132W LED TRIPOD WORK LIGHT

- 13200 Lumen
- 5 ft, 18/3 AWG SJTW Cord



Heating & Air Movers

MAXAIR CONFINED SPACE 12" VENTILATOR & HOSE

- 2000 CFM
- 2-Speed Control
- Intake or Exhaust



PROPANE HEATERS

- DURA HEAT FORCED AIR HEATER
- SINGLE-HEAD PROPANE HEATER
- DOUBLE-HEAD PROPANE HEATER



550 CFM AIR MOVER

- Stackable
- 3-Speed & 3 drying positions
- Power receptacles for linking multiple units



3800 FPM AIR MOVER

- Full-featured commercial dryer
- Low 4.4A draw
- 22 lb., compact
- 120V



Cleanup

6 CF WHEELBARROW

- Steel tub and handles
- Comfort grip



ROUND OR SQUARE POINT

ROUND POINT SHOVEL

SQUARE POINT SHOVEL

- Hardwood handles



9 GAL M18™ FUEL VAC



FUEL VACUUMS



9 GAL M18™ FUEL VAC

- .25 Gal canister capacity



M18™ FUEL BACKPACK VAC

- 1 Gal canister capacity

Cleanup

RUBBERMAID MAINTENANCE SUPPLIES

- 55 GAL BRUTE TRASH CAN
- 55 GAL LID
- BRUTE CADDY BAG CONTAINER
- BRUTE TRASH CAN DOLLY
- LID FOR 10G BRUTE TRASH CAN
- 10 GAL BRUTE TRASH CAN
- 20 GAL BRUTE TRASH CAN
- 44 GAL BRUTE TRASH CAN GRAY
- 32 GAL BRUTE TRASH CAN



SQUEEGEE

- 24" FLOOR SQUEEGEE - CURVED
- 36" FLOOR SQUEEGEE - CURVED

DISPOSAL EQUIPMENT

- 20 CT 42 GAL CONTRACTOR BAG
- STEEL DUST PAN
- POLY DUST PAN LRG W/HNDL

PUSHBROOMS

- 24" PUSH BROOMS W/BRACE



Waterproofing

HENRY PRODUCTS FOR WET/DRY APPLICATION

- 208 WET PATCH® ROOF LEAK REPAIR
- 208R RUBBERIZED WET PATCH® ROOF LEAK REPAIR
- 107 SEALER & DAMPROOFER



ELASTOMERIC JOINT SEALANTS

- SIKAFLEX -1A ELASTOMERIC JOINT SEALANT / ADHESIVE
- WHITE 10.1 OZ CARTRIDGE
- CAPITOL TAN 10.1 OZ CARTRIDGE
- BLACK 10.1 OZ CARTRIDGE
- DARK BRONZE 10.1 OZ CARTRIDGE
- ALUMINUM GRAY 10.1 OZ CARTRIDGE
- LIMESTONE 10.1 OZ CARTRIDGE
- LIMESTONE 20 OZ SAUSAGE
- PREMIUM-GRADE, HIGH-PERFORMANCE, MOISTURE-CURED, 1 COMPONENT, POLYURETHANE BASED, NON-SAG ELASTOMERIC SEALANT.
- CAN BE USED IN GREEN AND DAMP CONCRETE APPLICATIONS.



REDGARD WATERPROOFER

- 1G REDGARD ELASTOMERIC WATERPROOFER
- For stone and tile installation
- 1-coat crack protection
- 2-coat waterproofing
- Dries quickly
- Covers up to 350 SF



RAINBUSTER CAULKING

- 12 OZ GRAY CAULK GRAY
- 12 OZ GRAY CAULK GRAY (24)
- 12 OZ WHITE CAULK WHT
- WHITE CAULK WHT (24)
- 12 OZ WHITE CAULK WHT
- WHITE CAULK WHT (24)



RAM BOARD PRODUCTS

- 38" x 100' ROLL FLOOR PROTECTION
- Utilizes flex-fiber technology
- Added protection against water, paint, mud & more

- 2.83" x 164' SEAM TAPE
- Kraft paper backing



MEL-ROL WATERPROOFING MEMBRANE

- 38.5" x 62.5"



Drainage

PERFORATED PIPE

- 3" x 10' HDPE PIPE
- 4" x 10' HDPE PIPE
- 4" x 20' SCH40 PERFORATED PIPE



DRAIN SLEEVE

- 4" x 100' S&D DRAIN SLEEVE



Jobsite

FIBERGLASS STEP LADDERS

- TYPE II 4'
- TYPE 1A 4'
- TWIN - TYPE1A 6'



EXTENSION LADDERS

- ALUM TYPE I 16'
- FBRGLS TYPE 1A 20'
- FBRGLS TYPE 1A 16'
- FBRGLS TYPE 1A 24'
- FBRGLS TYPE 1A 28'

BUCKETS

- 5 GAL RED PLASTIC BUCKET
- 5 GAL PLASTIC BUCKET LID

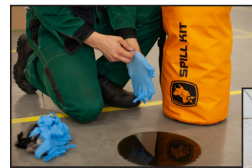


Water & Run Off Containment



The No Bull Solution For Construction Site Management

SPILL BULLY Innovative & Eco-Friendly



▲ Spill Kits
Eco-Friendly Absorbents



▲ Stormwater
Sediment Control
Erosion Management

▼ Containment
Heavy Equipment
Concrete/Paint Washout



TRASH PUMPS

- 2" 211GPM
- 3" 396GPM



SUMP PUMPS

- SUMP PUMP 1HP 73GPM
- SUMP PUMP 1HP 79GPM
- SUMP PUMP 1HP 87GPM



- SUMP PUMP .25HP 33GPM
- SUMP PUMP FLOAT SWITCH



Anaheim	Baldwin Park	Buena Park	Corona	Costa Mesa	Escondido	Fallbrook
1220 E. Ball Rd. Anaheim, CA (714) 772-5444	13470 Dalewood St. Baldwin Park, CA (626) 960-4802	6586 Beach Blvd. Buena Park, CA (714) 522-2864	150 W. Blaine St. Corona, CA (951) 278-4000	1100 Bristol St. Costa Mesa, CA (714) 556-1500	707 N. Andreasen Dr. Escondido, CA (760) 745-0414	215 E. Ivy St. Fallbrook, CA (760) 728-6151
Laguna Beach	Lake Forest	Los Alamitos	Northridge	Pasadena	San Juan Capistrano	South Bay
1765 Laguna Cyn. Rd. Laguna Beach, CA (949) 494-6538	23132 Orange Ave. Lake Forest, CA (949) 830-3600	10742 Los Alamitos Blvd. Los Alamitos, CA (562) 346-2100	18537 Parthenia St. Northridge, CA (818) 349-6701	3003 E. Colorado Blvd. Pasadena, CA (626) 993-2100	23865 Stonehill Dr. San Juan Capistrano, CA (949) 496-5765	2600 Del Amo Blvd. Torrance, CA (424) 350-3000

Connect With Us.



GanahlLumber.com

ADVERTISED ITEMS POLICY: We do our best to keep every item in stock. For this reason, we reserve the right to limit quantities. All items are limited to stock on hand and no rainchecks are available. Some items may not be available at all stores. Illustrations may differ from actual product. No dealers please. Markdown percentages are based upon original retail/list price.